



1.3 MEGAPIXEL DIGITAL CAMERA



CAMERA SUPPORTS SD/MMC CARD UP TO 2GB. PLEASE DO NOT USE SD/MMC CARD WITH MORE THAN 2GB MEMORY

OWNER'S MANUAL KT7004

PLEASE READ THIS OWNER'S MANUAL COMPLETELY BEFORE OPERATING THIS UNIT AND RETAIN THIS BOOKLET FOR FUTURE REFERENCE

1. INTRODUCTION

We have taken great care to make sure that this unit was in perfect working order when it left the factory. It has been designed to give you many years of enjoyment and trouble free operation. Read this manual before operating this unit to become familiar with its features and obtain the performance that will bring you continued enjoyment for many years.

You can use your Hello Kitty Digital Camera to capture not only snapshots of your family and friends, but also video clips of them in action ! Upload the images and video clips to your PC (running Windows 2000/ME/XP/Vista) or Macintosh (OSX 10.2-10.5.6) via USB (Universal Serial Bus) port .

Please note that your images and videos are stored in your Hello Kitty Digital Camera's internal memory (4MB available), if no SD Memory Card is installed in the SD Card Slot . After you have taken your images and videos , the Hello Kitty Camera will wait for 1 minute and then automatically switch off. A constant trickle of power from the battery keeps the images and videos stored in memory. When there is a Low Battery Indicator on LCD Display, at this time all stored images and videos must be uploaded to your computer and saved, otherwise, they will be lost.

For future reference, record the serial number in the space provided.

Model Number: **KT7004**

Serial Number: _____

2. COMPLIANCE WITH FCC REGULATIONS

This device complies with Part 15 of FCC Rules. Operation is subject to the following two conditions: (1) This device may not cause harmful interference, and (2) This device must accept any interference received, including interference that may cause undesired operation.

NOTE: This equipment has been tested and found to comply with the limits for Class B digital device, pursuant to Part 15 of the FCC Rules. These limits are designed to provide reasonable protection against harmful interference in a residential installation. This equipment generates, uses and can radiate radio frequency energy and, if not installed and used in accordance with the instructions, may cause harmful interference to radio communications.

However, there is no guarantee that interference will not occur in a particular installation. If this equipment does cause harmful interference to radio or television reception, which can be determined by turning the equipment off and on, the user is encouraged to try to correct the interference by one or more of the following measures:

- Reorient or relocate the receiving antenna.
- Increase the separation between the equipment and receiver.
- Connect the equipment into an outlet on a circuit different from that to which the receiver is needed.
- Consult the dealer or an experienced radio/TV technician for help.

Shielded cable must be used with this unit to ensure compliance with the Class B FCC limits.

Under the environment with electrostatic discharge, the product may malfunction and require user to reset the product.

CAUTION:

Changes or modifications not expressly approved by the party responsible for compliance could void the user's authority to operate the equipment.

3. TABLE OF CONTENTS

1. INTRODUCTION	1
2. COMPLIANCE WITH FCC REGULATION	2
3. TABLE OF CONTENTS	3
4. SYSTEM REQUIREMENT	4
5. PACKAGE CONTENTS	4
6. SOFTWARE INSTALLATION	4
HELLO KITTY PICTURE PLUS	5
HELLO KITTY DIGITAL CAMERA PC CAM DRIVER	5
7. POWER SOURCES	7
BATTERIES INSTALLATION	7
BATTERY GUIDANCE	7
8. FUNCTIONS AND CONTROLS	8
ICONS IN YOUR LCD	9
9. GETTING STARTED	10
POWER ON/OFF	10
GENERAL OPERATION	10
CAMERA MODE	10
VIDEO MODE	11
SELF-TIMER MODE	11
PLAYBACK MODE	11
10. CONNECTING THE CAMERA TO YOUR COMPUTER	12
11. UPLOADING IMAGES/VIDEOS TO YOUR COMPUTER	12
RUNNING PC CAM FOR CREATING LIVE VIDEOCLIPS	13
12. HELLO KITTY PICTURE PLUS	15
PHOTO CENTER	15
EDIT CENTER	15
MY PHOTOS	15
ADD PHOTOS	16
PROJECTS	16
HELP	16
13. CARE AND MAINTENANCE	17
14. TROUBLESHOOTING GUIDE	18
15. TECHNICAL SPECIFICATION	20
16. SERVICE	21

4. SYSTEM REQUIREMENTS

For Windows® Users

- Compatible with Microsoft® Windows® 2000/ME/XP/Vista
- Intel® Pentium® III 800MHz or higher
- 128MB RAM or higher
- USB 1.1 Port
- 80MB Hard disk space free
- CD-ROM drive
- Color monitor with high color (16-bit) graphic capability or higher
- Standard mouse and keyboard

For Macintosh® Users (mass storage Only)

- Compatible with Macintosh® OS X 10.2 – 10.5.6
- PowerPC™ Processor
- 128MB RAM or higher
- USB 1.1 Port
- 80MB Hard disk space free
- CD-ROM drive
- Color monitor with high color (16-bit) graphic capability or higher
- Standard mouse and keyboard

5. PACKAGE CONTENTS

- Hello Kitty Digital Camera
- Hello Kitty Picture Plus CD-ROM
Includes PCCam Driver and Hello Kitty Picture Plus software.
- Hello Kitty Neck Strap
- Owner's Manual
- USB Cable
- Warranty Card

6. SOFTWARE INSTALLATION

For Windows® Users

Hello Kitty Digital Camera PCCam Driver

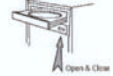
● PCCam

PCCam is a powerful video capture program, which provides you a full-featured platform to create your own digital video!

NOTE: PCCam function is for Windows based computers only. It does not support Macintosh Based computers.

● How to Install Hello Kitty Digital Camera PCCam Driver and PCCam

1. Insert the CD-ROM disc into the CD-ROM drive and close the CD-ROM drawer.
2. Installation wizard will automatically launch, Exit this installation.
3. Explore the CD-ROM under my computer.
4. Double Click MegaCam_2.006_0608.exe under PC-cam (Web-cam) folder
5. Follow the instructions presented on the screen to complete the installation. Click "Yes, I want to restart my computer now" and "Finish" to restart your computer and wait for your PC to restart automatically.



● Uninstalling your Hello Kitty Digital Camera and PCCam Driver

To uninstall Hello Kitty Digital Camera PCCam Driver and PCCam, click the "Start Menu" on your Windows desktop, choose "Mega Cam" folder under Program and choose "Uninstall". Follow the on screen instructions.

Hello Kitty Picture Plus

Hello Kitty Picture Plus is designed for your complete Hello Kitty experience, you can print, email and share your Hello Kitty digital creations!

● How to Install Hello Kitty Picture Plus

1. Insert the CD-ROM disc into the CD-ROM drive and close the CD-ROM drawer.
2. Installation Wizard will automatically launch.
3. Click the "Install Picture Plus" icon.
4. Follow the instructions presented on the screen to complete the installation.
5. Click "Exit" to complete the installation wizard.
6. Restart the computer



● Uninstalling your Hello Kitty Picture Plus

1. Re-insert the CD-ROM disc into the CD-ROM drive and close the CD-ROM drawer.
2. Installation Wizard will automatically launch.
3. Click the "Uninstall Picture Plus" icon.
4. Follow the instructions presented on the screen to uninstall the Hello Kitty Picture Plus.
5. Click "Exit" to complete the uninstalling wizard.
6. Restart the computer

Note:

If the setup screen doesn't appear after loading the CD, then you can manually start it by double-clicking the "My Computer" icon on your desktop, then double-clicking the icon for the CD-ROM drive. Picture Plus installation screen will launch.

For Macintosh® Users with MAC® OS X 10.2-10.5.6

Hello Kitty Picture Plus

Hello Kitty Picture Plus is designed for your complete Hello Kitty experience, you can print, email and share your Hello Kitty digital creations!

● **How to Install Hello Kitty Picture Plus**

1. Insert the CD-ROM disc into the CD-ROM drive and close the CD-ROM drawer.
2. Double Click "Picture Plus" icon after CD-ROM loaded.
3. Double Click "INSTALL.OSX" icon, installation screen will appear.
4. Click the "Install Picture Plus" icon.
5. Follow the instructions presented on the screen to complete the installation.
6. Click Exit to complete the installation wizard.
7. Restart the computer.



● **Uninstalling your Hello Kitty Picture Plus**

1. Re-insert the CD-ROM disc into the CD-ROM drive and close the CD-ROM drawer.
2. Double Click "Picture Plus" icon after CD-ROM loaded.
3. Double Click "INSTALL.OSX" icon, installation screen will appear.
4. Click the "Uninstall Picture Plus" icon.
5. Follow the instructions presented on the screen to uninstall the Hello Kitty Picture Plus.
6. Click Exit to complete the uninstalling wizard.
7. Restart the computer.

7. POWER SOURCES

Batteries Installation

1. Unscrew and lift the battery compartment door.
 2. Following the polarity diagram inside the battery compartment, install 2 "AAA" size (UM-4) batteries (not included). Alkaline batteries are recommended.
- IMPORTANT:** Be sure that the batteries are installed correctly. Wrong polarity may damage the unit.
3. Push down and slide closed the battery compartment door, tighten the screw.

WARNING!

To avoid losing images when changing the batteries, please make sure all your images and videos have been uploaded to your PC before changing the batteries. You can also replace the batteries when the camera is plugged into your PC via the USB cable. The computer must be turned on if you choose to replace the batteries using this option.

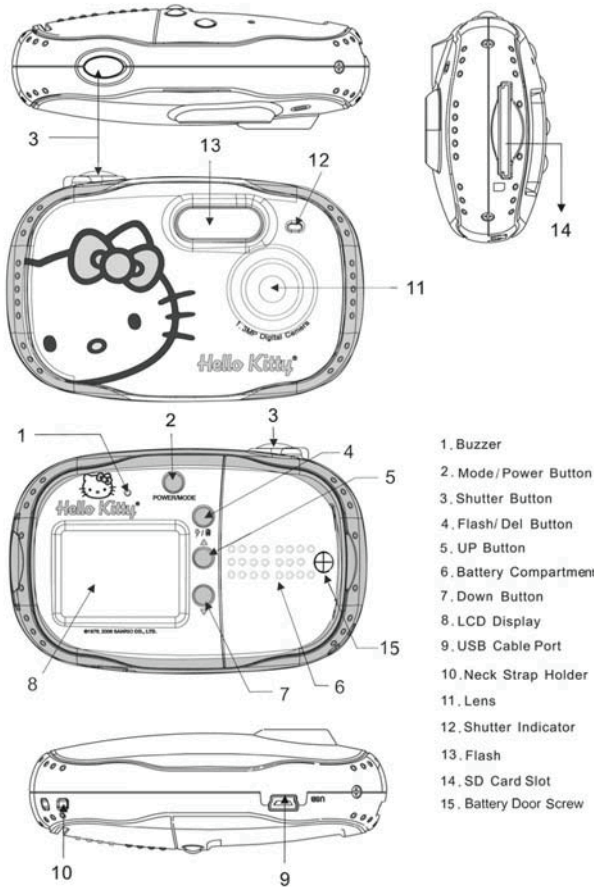
Battery Guidance

WARNINGS!

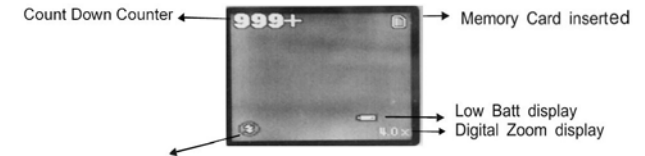
- Batteries should only be replaced by an adult.
- Alkaline, standard (carbon-zinc) and other non-rechargeable batteries must not be recharged.
- Rechargeable batteries must be removed from the camera before being charged.
- Rechargeable batteries must only be charged under adult supervision.
- Never mix alkaline, standard (carbon-zinc) or rechargeable batteries.
- Only use batteries recommended by the manufacturer.
- Batteries must be inserted with the correct polarity.
- Exhausted batteries are to be removed from the camera.
- The supply terminals must not be short-circuited.
- Do not dispose of the batteries in fire. Batteries may explode or leak.
- Batteries should be removed from the camera when not in use.
- Do not mix old and new batteries.

These instructions should be retained for future reference.

8. FUNCTIONS AND CONTROLS



ICONS IN YOUR LCD



- Strobe Off
- Strobe Auto
- Strobe Forced
- AVI files

USB MASS STORAGE DEVICE

PC CAM

CAMERA MODE

VIDEO MODE

SELF-TIMER MODE

PLAYBACK MODE

OK TO CONFIRM

CANCEL

TAKE PHOTO

DELETE ALL PHOTOS

DELETE CURRENT PHOTO

SD/MMC CARD IS NOT RECOGNIZED

9. GETTING STARTED

POWER ON/OFF

1. In unit power off mode, insert your SD/MMC card into the SD slot according to the direction shown on the unit.
2. Press the Power/Mode button once to start the camera. Wait about 2 seconds. The LCD will light up and the camera will sound a beep. It confirms that your camera is on and ready to use.
3. Press and hold the Power/Mode button about 3 seconds to turn off the camera.

WARNING: Do not insert or remove SD/MMC card if unit is powered on, otherwise, data may be lost and your card may be damaged.

FORMATTING SD/MMC CARD

If the SD/MMC card you insert into the unit is not in the correct format, the unit will prompt you to format the card.

1. Use Up/Down button to select OK.
2. Press Flash/Del button to confirm formatting.

WARNING: Formatting will erase ALL data in SD/MMC card and format it into FAT file system which your camera is using.

NOTE: If you do not select format but just press the Flash/Del button once, an unrecognized SD/MMC card icon will appear in LCD display. The unit will not perform any function until you power off and on again and then format the card.

GENERAL OPERATION

Power on your camera, the camera will be in the camera mode. Press Power/Mode button to have individual settings:

CAMERA MODE

Taking photos

Hold the camera steady and press the Shutter button to take photo. There will be a short delay while the camera saves the photo to memory. Count down counter will count down if memory space is used up to countable range. Otherwise, it will display "999+."

After each photo is shot (when the camera returns to icon mode) the number of photos left is displayed at the top left of the LCD screen.

When the camera's memory is (photo capacity) full, the LCD screen will display "FUL". If you attempt to take a photo when the memory is full, the camera will beep twice.

NOTE: Count down counter may count more than one due to captured image or file size.

Digital zoom

You can magnify subject up to 4 times using the digital zoom. Press UP button to zoom in the subject up to 4X. Press Down button to zoom out back.

Flash

In low light conditions, it is best to use the built-in flash. You can also use the flash to compensate for back conditions.

How to set flash

1. Press **Flash/Del** button, the icon will appear on the LCD screen. This means the flash function has been "forced on" (manual flash). If the flash is not ready, the icon will flash repeatedly. Wait until the flash is ready before taking a photo. A low battery warning will appear on the LCD screen if there is insufficient battery power to operate the flash.
2. Press **Flash/Del** button repeatedly, select icon appears on the LCD screen. This will activate the automatic flash.
3. Press **Flash/Del** button repeatedly until the icon appears. This will turn off the flash function.

VIDEO MODE

Press **Power/Mode** button repeatedly to exchange Camera to Video Mode. The icon will appear on the LCD screen.

You can take 320 X 240 pixels digital video clips in AVI file format without audio with your camera.

Without an SD memory card, the limited internal memory in your camera is provided for testing the video.

1. Press the Shutter button to start recording, AVI icon blinking.
2. To stop/save recording, press the Shutter button again.

Note:


1. The video will be saved in AVI (Audio Video Interleave) format and can be played by either with Windows Media Player or Apple Quick Time in your computer.
2. Shooting time 35 seconds maximum per video clip.
3. Recorded video cannot be played back on unit's screen.

Self-timer Mode

You can include yourself in a photo by using this feature to delay the time between your pressing the Shutter and when the photo is actually taken.

1. Press the **Power/Mode** button repeatedly to Self-timer Camera mode. The icon will appear on the LCD screen.
2. Press Shutter button to start a 10 second count down (the count down will appear on the LCD). After 10 seconds, a photo is taken.

PLAYBACK MODE

Press **Power/Mode** button to Playback mode. The icon "  " will appear on the LCD screen. You can review the photos you have Captured.

DELETE IMAGE(S)

In playback mode Press **Flash/Del** button once, you can erase current photo or movie, Press and hold for two second, you can delete ALL photos and movies .

Use UP and DOWN to select and confirm delete by pressing again the Flash/Del button.

NOTE: When you select delete all, no only photos/images but all data stored in memory card will be deleted


LOW BATTERY INDICATION

When batteries become exhausted, a blinking low battery icon will appear on the LCD screen Please backup your data and replace with fresh batteries immediately to maintain normal operation of the unit.

Note: Stored images, video and data in internal memory of the unit will be lost during batteries replacement. Please download images to your PC before replacing batteries.

10. CONNECTING THE CAMERA TO YOUR COMPUTER

The USB cable allows you to upload images and videos from your Hello Kitty Digital Camera to your computer. One end of the cable connects to the USB port (#9) on the side of the Hello Kitty Digital Camera, while other end connects to your computer's USB port. When the Hello Kitty Digital Camera is connected to your computer, it will draw power from the USB cable and preserve the cameras battery life.

The USB port can be found on the front or back panel of your computer. Look for this symbol  next to the connection port. (Also see your computers operating manual for the location of your USB connection port.)

11. UPLOADING IMAGES/VIDEOS TO YOUR COMPUTER

For Windows® Users


1. Connect your Hello Kitty Digital Camera to your computer via the USB Cable.
2. Hello Kitty Digital Camera will become a USB mass storage device in your computer. Shown as a "Removable Disk" in My computer Windows
3. To upload images or videos to your computer, simply drag and drop the desired images or video files anywhere on your computer from the "Removable Disk" windows.

For Mac® Users

1. Connect your Hello Kitty Digital Camera to your computer via the USB Cable.
2. Hello Kitty Digital Camera will become a USB mass storage device in your computer. Shown as a "Dsc _ Fatdisk " in computer Windows
3. To upload images or videos to your computer, simply drag and drop the desired images or videos files anywhere on your computer from the "Dsc _ Fatdisk " windows.

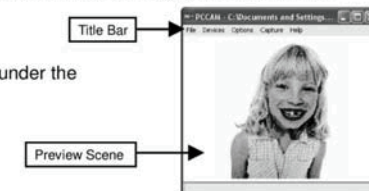
Note: When your Hello Kitty digital camera is connected to a computer, the LCD display will show 

Running PCCam for Creating Live Video Clips (For Windows® User Only)

1. Press and hold the shutter button of the camera, connect your Hello Kitty Digital Camera to your computer via the USB Cable.
2. Release the shutter button when the PCCam  icon appears on the LCD display
3. Run the PCCam application.
Select the PCCam icon from the Mega Cam program group on Windows Start Menu or double-click the PCCam shortcut icon inside the Mega Cam folder on the Desktop.

● To Preview a Scene

To preview your scene, click "Preview" under the "Options" Title Bar.



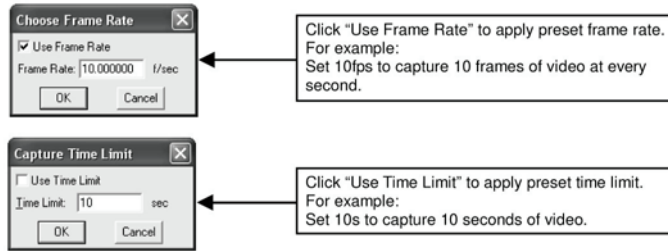
● To Adjust Resolution

There are 3 selectable resolutions: 160x120, 320x240 and 640x480

To adjust the resolution, click the "Video Capture Pin" under the "Options" Title Bar.

- **To Adjust Frame Rate**

To adjust frame rate (number of frame per second) and time limit (time to capture your video clip) of your live video clip, click "Set Frame Rate" and "Set Time Limit" under "Capture" Title Bar.



Note:

The camera supports a maximum of 10fps at 640x480 resolution and 25fps for 320x240 and 160x120 resolutions.

- **Miscellaneous Settings**

To set a default path and filename of your video clip, click "Set Capture File" under the "File" Title Bar.

e.g. To set default path and filename as C:\Documents and Settings\User\Desktop\MyVideo.avi

To adjust the video imaging properties, click "Video Capture Filter" under "Options" Title Bar.

- **To Capture Live Video**

To start capturing, click "Start Capture" under the "Capture" Title Bar, then click "OK" for the pop-up messenger.

To stop the video capture, click "Stop Capture" under the "Capture" Title Bar.

12. HELLO KITTY PICTURE PLUS

Photo Center

Use the photo center to manage your photos. There are 5 options: Edit, Slide Show, Print, Export and Remove. Before choosing the option, you have to pick and click a photo first (except "Slide Show").



Edit Center

Use any of the 22 editing tools (not including Print and Save) to modify your photo. Then save your edited photo for future use.

Note:

Your original photo will not be altered when you use the edit center.

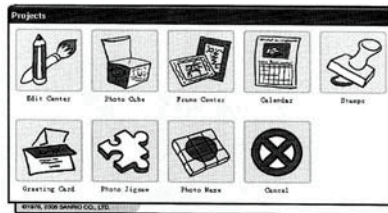
My Photos

My photos is an album that allows users to choose a specific photo for display or edit purposes.



Add Photos

Import a single or a folder of photos from your PC or other devices.



Projects

You can use your photos in the following features and games: Edit Center; Photo Cube; Frame center Calendar; Stamps; Greeting Card; Photo Jigsaw and Photo Maze.

Help

Explains how to use Picture Plus clearly, such as how to print, export or edit a photo.



13. CARE AND MAINTENANCE

Your Hello Kitty Digital Camera should only be operated within the following environmental conditions:

- 0 – 40° Celsius.
 - 20% - 85% relative humidity, non-condensing.
- Battery life or image quality may be affected outside these conditions.

Camera Cautions:

- Never immerse any part of the camera or its components into any fluid or liquid.
- Disconnect the camera from your computer before cleaning it.
- Remove dust or stains with a soft cloth dampened with water or neutral detergent.
- Do not place hot items on the surface of the camera.
- Do not attempt to open or disassemble the camera. This will affect any warranty claim.

WARNING: Avoid rubbing the camera with the metal ball chain neck strap. Otherwise, the surface may be scratched. We are including a soft neck strap.

14. TROUBLESHOOTING GUIDE

The troubleshooting guide is designed to help you. If problems continue, please contact your local customer support hot-line. See your registration card for hotline contact details.

Sympton	Problem	Solution
For Windows® Users:		
I receive an error message when I am installing the Hello Kitty Digital Camera PCCam Driver.	Hello Kitty Digital Camera PCCam Driver does not load.	Shut down all other applications and attempt to re-install the driver, or download the updated driver from www.spectrainfl.com/xsp/KT7004updates.html and install the updated driver. Check the USB controller in your BIOS if they are activated. If there do not work contact your national Customer Support representative.
The Battery Indicator is flashing.	Hello Kitty Camera connected to the PC (via the USB) Not recognised	Restart your PC, and then connect the Hello Kitty Digital Camera to the PC via the USB port.

Sympton	Problem	Solution
For All Users:		
All the image I have taken do not appear on the Hello Kitty Digital Camera.	You have lost power to your Hello Kitty Digital Camera by either: Insufficient battery power	Upload all images to your PC as soon as possible. (Please refer to Battery Guidance section in User's Manual.)
	Removing the battery without being connected to your PC (turned on) via the USB cable.	If you need to change batteries and save the images in your camera's memory, you need to be connected to a PC via the USB cable, and make sure the PC is ON. The camera will now be powered by the USB cable while you inert fresh batteries.
I cannot upload images to the PC	Connection failure	Check that all cable connections are secured and that both plugs are fully inserted.
I cannot upload images to the PC and other camera functions fail.	Static discharge while connecting USB cable.	Momentarily remove the batteries and disconnect the USB cable. Please note that pictures will be lost when power is disconnected. Upload pictures frequently to minimise their possible loss.
I pressed shutter button but no response after I turned on the flash.	The Hello Kitty Digital Camera is charging the flash unit and/or processing the image.	Wait for the Flash Indicator to turn on and then take another picture.
Display shows "E50-E58"	Inserted SD/MMC card more than 2GB.	Remove and reinstall the batteries for rest. Change to a 2GB or below SD/MMC card. KT7004 can support up to 2GB flash memory SD/MMC card.
	Inserted SD/MMC card is invalid or not recognizable by the unit	Check that the SD/MMC card is in good condition and not damaged.
The Battery Indicator is flashing.	This means there is insufficient power.	You need to change the batteries.

Please also refer to the help files & User Guides that accompany the enclosed applications.

For further Information and updated software support (driver and application program), please visit the following website:

<http://www.spectrainfl.com/xsp/KT7004updates.html>

15. TECHNICAL SPECIFICATION

Image Sensor	1.3 Mega Pixels CMOS Sensor
Image Resolution	Digital Camera: 1280x1024 pixels Video: 320*240 pixels(QVGA)
LCD Display	1.4 Inch CSTN LCD
Internal Memory	8 MB SDRAM (Storage 4MB+Firmware 4MB)
External Memory	SD/MMC card(MAX. SUPPORT 2GB)
Lens	F3.0 Fixed Focus Lens
Focus Range	28 Inches-Infinity
Zoom	1 to 4X Digital Zoom
Exposure	Auto
White Balance	Auto
Self-timer	10s
File Format	JPEG/AVI(No audio)
Flash	Build-in Auto/Force/Off
Interface	USB1.1
Auto Power OFF	1 minute
PC Cam	up to 10 fps VGA, 25 fps QVGA
Battery	2 x AAA(UM-4)
Working Temperature	0-40 °C

16. SERVICE

Please refer to the instructions on the enclosed warranty card for returning your unit for service. When returning the unit, please remove batteries to prevent damage to the unit in transit and/or from possible battery leakage. We are not responsible for batteries returned with the product or for the cost of replacement.

Distributed by:
Spectra Merchandising International, Inc.
4230 North Normandy Avenue
Chicago, IL 60634, U.S.A.

Please have model number ready, for Customer Service, call 1-800-777-5331